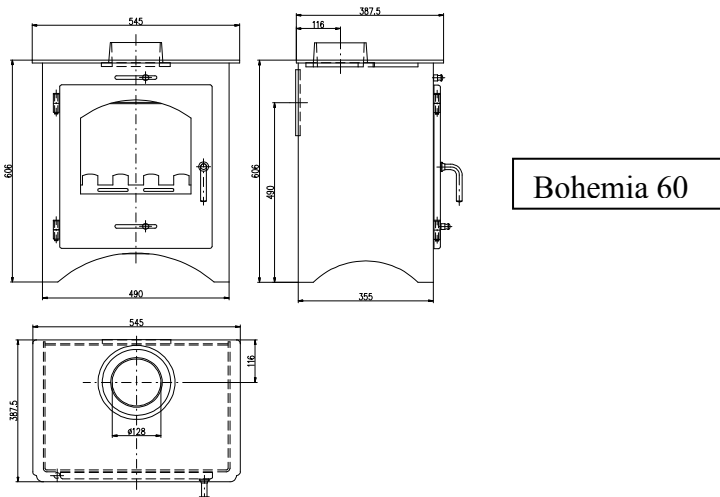
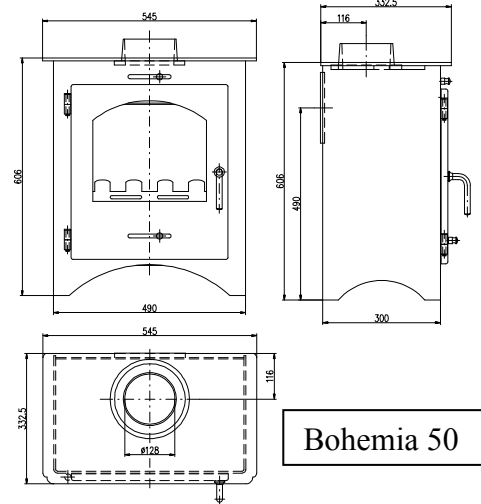
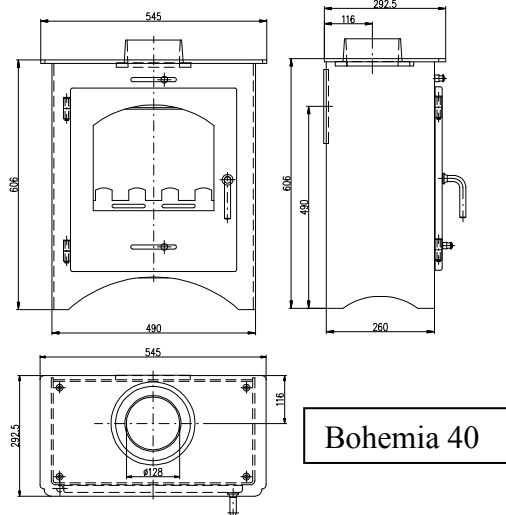
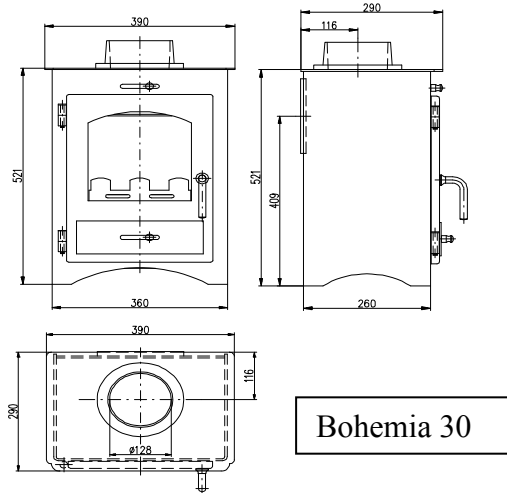


# Bohemia 30 40 50 60

## FREE STANDING WOODSTOVE.

Distributed in the UK by Pevex Heta UK. Unit 16. Seven Acres Business Park  
Waldringfield, Ipswich, IP12 4PS. Tel 01473 736399



### INSTRUCTIONS

Congratulations on the purchase of your new stove, we are convinced that your new purchase will provide you with a great deal of pleasure and a become the heart of your home - especially if you follow the advice and instructions below.

### **The following items are supplied with your stove:**

- A Mitten or glove for use with operation of door handle and ashpan.
- Flue blanking plate.
- Flue collar.

### **ASSEMBLY**

The stove is supplied with; 1. A flue blanking plate; 2. A flue collar, that require fitting. Fit the flue collar and flue blanking plate in the appropriate position. If the flue collar is fitted for a rear outlet position then the flue blanking plate fitted to the top outlet can also be used as a boiling plate for a kettle.

## **ASSESSING THE REQUIREMENTS FOR THE INSTALLATION OF A STOVE**

Your supplier or Heta registered installer will fully advise on individual requirements.

It is essential to fully assess the situation and requirements that are needed from a stove.

It is most important that the stove is the correct size. This means that the output should match the heat requirements of the room.

Also to be considered is the fuel choice. The storage of fuel for easy access to the stove and a bulk store outside.

Having decided on the ideal appliance then the installation should be fully assessed.

The fireplace or and hearth should conform to at least the minimum requirements laid out in the building regulations.

The chimney requirements should be carefully assessed.

Hearth requirements should be carefully specified, remember the building regulations lay out the minimum requirements. The chances of damaging a floor or carpet will be much reduced if the depth of a hearth is extended beyond the minimum.

Assess also the fireplace surround if any is to be used, it is essential that no combustible materials are used within a safe distance of a stove. This requirement may vary depending on the construction of a stove but it is advised to keep combustible materials at least 50cms preferably 1metre away from the stove or flue pipe.

Freestanding stoves must stand on a non combustible hearth that must extend at least 300mm. in front and 150mm. to either side. Any combustible materials should be at least 500mm distant and should never exceed 80C.

**It is deemed safe to install the stove on combustible floor protected by a non combustible hearth plate of at least 12mm thickness.**

Note uninsulated flue pipe must be installed to local building regulations (We recommend that more than a 1 metre length of plain uninsulated pipe is used before connection to a chimney system and that no combustible materials are within 500mm of the flue pipe.

Note if the stove is to be installed in front of non combustible materials nearer than 1 metre a heat shield must be fitted to the stove (not supplied).

Planning the installation.

It is essential that the installation is carried out by an experienced and competent installer (Preferably HETAS registered see [www.hetas.co.uk](http://www.hetas.co.uk)).

A stove compared with an open fire is a seriously efficient heating machine and must be installed and used safely and wisely, it is important to understand the working of such an appliance and to understand the process of converting the fuel into heat and its efficient transfer from the firebox to the room in order to gain the most from the stove.

It is important to realize that an open fire is an immensely inefficient device compared with a stove. A stove will operate at an efficiency of between 65 to 85% at best an open fire will achieve an efficiency of 45% and often a large fireplace can operate at a negative efficiency. (on a cold day a large open fire with an old lined chimney can drag more heat out of the room than it can radiate back into it. Worth remembering too is that an open chimney will suck heat from a room when the fire is unlit.

A stove creates a near perfect environment to burn wood in. The firebox will run at a very high temperature ideal to burn all the volatiles given off in the burning process and then the near airtight control allows the minimum of heat loss into the flue.

Burning wood is the natural way to store the suns energy to then be released in a carbon neutral process to heat your house when the need is most. On a cold winters night there is nothing to beat the release of heat and flame in a stove to raise the spirit.

The preparation and burning of wood as a fuel in stoves can be traced back many centuries, however it is a forgotten or maybe never discovered activity in the United Kingdom, we have much to learn from our European and Scandinavian neighbors whose colder winters have instinctively led them into a natural wood burning culture.

Wood for fuel is probably one of the most environmentally friendly energy sources, it is carbon neutral, trees used for fuel production regenerate very quickly and it is a pleasant and satisfying job preparing the firewood for the coming winters.

## **INSTALLATION INSTRUCTIONS for UK excluding Scotland where local Building regulations must be conformed to.**

It is essential that the stove is installed by a competent person (e.g. a HETAS Certificated installer) or that the installation is carried out under Local authority building control approval and inspection.

See the Building Regulations 2002 document J on

[http://www.communities.gov.uk/pub/596/ApprovedDocumentJCombustionappliancesandfuelstoragesystems2002edition\\_id1165596.pdf](http://www.communities.gov.uk/pub/596/ApprovedDocumentJCombustionappliancesandfuelstoragesystems2002edition_id1165596.pdf)

Please see also

[http://www.communities.gov.uk/pub/340/DomesticHeatingComplianceGuide\\_id1165340.pdf](http://www.communities.gov.uk/pub/340/DomesticHeatingComplianceGuide_id1165340.pdf)

[http://www.odpm.gov.uk/pub/711/SolidfuelwoodandoilburningapplianceessafetyleafletPDF158Kb\\_id1130711.pdf](http://www.odpm.gov.uk/pub/711/SolidfuelwoodandoilburningapplianceessafetyleafletPDF158Kb_id1130711.pdf)

Recommended Reading

Fireplaces Chimneys and Stoves by Michael Waumsley.

Published by the Crowood Press. ISBN1 86126 746 0

### **Bohemia, baffle plate**

On installation check that the steel flue baffle is correctly located. The baffle should fit on the rear firebricks and rest on the two lugs on the sides of the stove, the baffle is designed to direct the flame path towards the front of the stove.. Removal of the steel baffle allows access into the flue system for sweeping if required.

### **The chimney connection.**

The flue pipe must be installed according to Building regulations.

We recommend also that no more than 1 metre of plain uninsulated flue pipe be used to connect to the chimney.

We recommend that the chimney liner should be minimum 125mm diameter and maximum 150mm diameter.

### **All chimneys should be swept and inspected before installation of any appliance**

For relining existing chimneys 316 or 904 grade stainless steel liners or pumice cement liners to satisfy building regulations are recommended. Liners should be suitably insulated .

For new chimneys we recommend pumice cement liners.

A chimney draught of at least .06 is recommended.

Provision must be made for easy sweeping of the chimney. A soot door can be built into a masonry chimney and flue pipe is available with cleaning doors.

**The Chimney should be swept at least once a year. The stove fluepipe and baffle should be checked monthly to clear any fly ash or soot.**

### **Sweeping through the Bohemia.**

It is possible to sweep through the Bohemia Stoves. Remove the baffle, and access can be gained to the flue pipe.

## Ventilation

Adequate ventilation must be provided in accordance with building regulations .

**Purpose made ventilation is not required on the 30 40 and 50 models but sufficient adventitious ventilation must be available.**

**Bohemia 60 requires under Building Regulations a purpose made air supply of minimum 550sq mms.**

## COMMISSIONING

The installer should carry out the following checks and ensure that the stove is fully functional. We strongly recommend that a first firing is included in the commissioning process

1. Check all flue pipe connections.
2. Check door latch mechanism.
3. Check door and glass seals are all intact and secure.
4. Warm chimney and check draught.
5. Instruct customer in use of stove.
6. Leave instructions for customer.
7. Check that after initial firing the door seals are not stuck to the body of the stove.

## Instructions for use:

### First firing

The stove has been treated with a heat-resistant coating which hardens at a temperature of approximately 250<sup>0</sup> C. This hardening process causes the production of smoke and malodorous fumes, so the room must be very well ventilated.

**During the first firing**, which should be carried out using approximately 1 kg of wood, the stoking door must be left slightly open and must not be closed until the stove is cold. This is to prevent the sealing rope sticking to the stove.

### Fuel

Correct firing provides optimal heat output and maximum economy. At the same time, correct firing prevents environmental damage in the form of smoke and malodorous fumes and also reduces the risk of chimney fires.

Well seasoned woodfuel is essential for correct use.

Make sure fuel it is kept dry.

If the fuel is wet, a large proportion of the heat will be used to vaporize the water, and this energy will disappear up the chimney. It is clearly not only uneconomical to fire with wet fuel but also - as mentioned above - increases the risk of producing soot, smoke and other environmentally damaging by-products. When wood is used as a fuel it is important that it is dry, i.e. wood with a moisture content less than 20%. Ideally firewood needs seasoning for at least 2 summers, Logs should be stacked in a well ventilated situation , logs over 100mm. dia. should be split. The stack should be protected from rain.

## **MIXED FUEL USE**

### **Use of coal and smokeless fuel**

We highly recommend Uni-logs (brown coal briquettes). Good performance will be obtained using these briquettes.

We recommend the use of approved smokeless coal fuels. - Avoid over firing. We recommend using a mixture of seasoned wood and smokeless fuel.

Petroleum coke must not be used.

Over firing .If the stove is fired to temperatures in excess of 500C. Damage of this nature is not covered by the guarantee.

### **Lighting and combustion**

The primary air is drawn into the stove through the rosette on the ash door. The secondary air is regulated with the aid of a slider above the door on the Bohemia. The heated secondary air flows down the viewing window and then feeds the fire, it is this secondary combustion that completes the burning cycle by turning unburned volatiles into flame.

As much as half of the heat obtainable from wood is obtained from this secondary combustion. It is important that the firebox temperature is maintained at a high level as this also aids complete combustion.. The use of a stove pipe thermometer is recommended as this will give a easy indicator as to the operation of the stove . For Example, when first lighting a stove it is important to get it really hot before closing the burning rate down. The firebox temperature should reach 800C this equates to approximately 250C at the flue pipe

If the stove is operated at this optimum level very clean combustion should be achieved, little or no smoke should be seen from the chimney.

The best way to light the fire is to use rolled-up balls of paper or firelighters and small pieces of wood laid on the fire grate. Open both the secondary air intake and the rosette. When the wood is burning well (after approximately 10 to 20 minutes), the next load of fuel can be added. The maximum volume of fuel is clearly indicated in the table. Take care that the fuel is not stacked too closely. It is important to establish a really good hot fire before closing down the air vents. The primary and secondary air-flows can now be regulated as necessary.

### **Risk of explosion**

A risk of explosion can possibly arise if too much dry wood is placed in the stove and burnt with insufficient combustion air.. This may result in the production of large volumes of gas, and this gas can explode if the intake of primary and secondary air is insufficient and the firebox temperature to low.

To achieve optimal firing and the best possible heat output, the primary and secondary air intakes must be correctly adjusted. As a general rule, the fire should be regulated using secondary air supply, with which the smoke gases are ignited. This produces a high level of efficiency, and also keeps the viewing window clean because the secondary air 'washes over' the glass.

For woodburning it is an advantage always to leave some ash lying in the bottom of the combustion chamber.

Take care when emptying the ash pan, as cinders can continue to burn in the ash for long periods of time.

NOTE: It is advisable always to leave the top air control slightly open.

Please note that the stove will, naturally, produce soot if both the primary and secondary air intakes are closed completely. This will prevent oxygen from being drawn into the stove, and the viewing window and other parts will become covered with soot and, or tar.

The nominal output is the output to which the stove has been tested. In practice, the stove burns with a heat output range between its minimum and maximum ratings.

### **Maintenance of matt black paint finish**

The surface of the stove has been treated with heat-resistant paint. The stove should be cleaned with a damp cloth. Any damage to the surface in the form of chips or scratches can be repaired using touch-up paint, which is available in spray cans. If the stove has become grey in colour due to overheating, touch-up paint of this kind can be used to

repaint the stove entirely. Or the stove can be maintained with a traditional type of stove polish of which there are several proprietary makes available.

## **Cleaning the glass**

Incorrect firing, for example using wet wood, or slow burning can result in the viewing window becoming covered in soot. This soot can be easily and effectively removed by using a damp cloth or when necessary a proprietary stove glass cleaner or an ordinary scouring liquid, when the glass is cold.

## **Operational problems**

In the event of smoke or malodorous fumes being produced, you must first check to see whether the chimney is blocked. The chimney must, of course, always provide the minimum, draught necessary to ensure that it is possible to regulate the fire. However, the chimney draught may also be affected by weather conditions. Both wind and temperature can affect the performance of a chimney.

In cases where the wood burns too quickly, this may be due to excessive chimney draught. You should also check to make sure that the door seal is intact. If the stove produces too little heat, this may be due to the fact that you are firing with wet wood. A large proportion of the heat output will be used to dry the wood, resulting in both uneconomical heating and an increased risk of soot and tar deposits forming in the chimney.

## **STANDING DOWN AT THE END OF THE SEASON**

At the end of the burning season the stove should be prepared for the stand down period, this is to prevent corrosion both in the stove and flue system.

The stove should be cleared of all ash the baffle and flue ways cleared of soot and flyash and the chimney swept.

All air vents should be in the open position and it is recommended that the door is left ajar to ventilate the chimney.

This is the ideal time to check for parts that may need replacing and to lubricate any hinges door catches and also it is recommended that all screws holding the glass in place are removed and replaced with a little lubricant.

PEVEX HETA UK

**Importers and Distributors of Traditional and Contemporary Wood burning Stoves .**