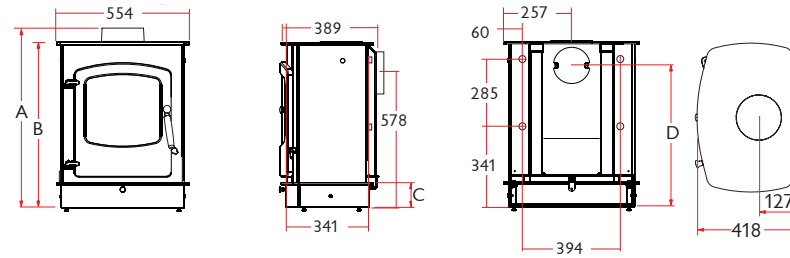


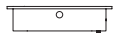

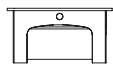
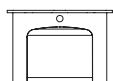
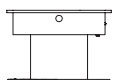
charnwood 

**COVE 2B**  
**STOVE DIMENSIONS**



The COVE 2B is the latest addition to Charnwood's unrivalled range of biomass and multi-fuel boiler stoves. Based on our contemporary Cove stove the COVE 2B incorporates a thermostatically controlled integral boiler sufficient to power up to 9 radiators plus domestic hot water. The stove features Charnwood's clean burn air wash system and renowned converting grate for optimum fuel flexibility and easy ash removal.



		A	B	C	D	WEIGHT
<b>LOW STAND</b>		<b>748</b>	<b>698</b>	<b>103</b>	<b>532</b>	<b>145KG</b>
<b>LOW ARCH</b>		<b>748</b>	<b>698</b>	<b>103</b>	<b>532</b>	<b>127KG</b>
<b>MIDI STAND</b>		<b>875</b>	<b>825</b>	<b>230</b>	<b>659</b>	<b>148KG</b>
<b>STORE STAND</b>		<b>995</b>	<b>945</b>	<b>350</b>	<b>779</b>	<b>151KG</b>
<b>CENTRE STAND</b>		<b>995</b>	<b>945</b>	<b>350</b>	<b>779</b>	<b>164KG</b>

**Heat Output to Room (Wood)**

NOMINAL OUTPUT (1.5hr re-loading period) - 4.6kW

**Heat Output to Boiler (Wood)**

NOMINAL OUTPUT (1.5hr re-loading period) - 6.4kW

DHW & approx. 7 rads Also suitable for underfloor heating

**Heat Output to Room (Anthracite)**

NOMINAL OUTPUT (4hr re-loading period) - 7.1kW

**Heat Output to Boiler (Anthracite)**

NOMINAL OUTPUT (4hr re-loading period) - 9.3kW

DHW & approx. 10 rads Also suitable for underfloor heating

**Flue Outlet**

Top or Rear 150mm (6") diameter

**Maximum Log Length**

370mm (14.5 inches)

**Optional Accessories**

Ash Carrier

Vertical Rear Flue Connector

